

# NANGWARRY PRIMARY SCHOOL

June 29th 2023

Week 9 Term 2

A: Whitford Crescent Nangwarry SA 5277 | T: 08 8739 7241 | F: 08 8739 7292 | E:dl.0592.info@schools.sa.edu.au | W: www.nangwaryps.sa.edu.au

## FROM THE PRINCIPAL

### Student Growth

As another term concludes it is important that we celebrate every students learning growth and improvement. Every child will receive a school report this term. Sometimes a child will not move up a grade on the A-E scale. However, that does not mean that they are not progressing. To move up there are lots of learning milestones within the Australian Curriculum which a child must be able to do. Please take the time to talk with your child when they receive their school report to celebrate the big improvements as well as the small ones. This certainly helps with your child's confidence and enjoyment for school. If you have specific questions about your child's report please contact their teacher directly.

### School Upgrades

During the holidays our front office is being refurbished with some contemporary upgrades, it will certainly look very different for the start of Term 3. We ask that if you see builders / workers in the front office over this period that you avoid the area and allow the works to be completed. We were also successful in receiving a grant for \$25,000 which will be utilised to revamp building 2. This space will become a new multipurpose learning area with the inclusion of the school's library and a large open area which will also enable community clubs to continue to access this area. This is going to be a wonderful inclusion to our school.

Thanks,  
Stuart Miller

### IMPORTANT DATES

#### Week 10

Friday 7th July PJ Day and Toasties

Friday 7th July

Last Day of Term and Early Dismissal 2:15PM

#### Week 1

Monday 24th July school resumes 8:30AM

Tuesday 25th July whole school including preschool pupil free day

### 2023 TERM DATES

#### Term 1

30th January to 14th April

#### Term 2

1st May to 7th July

#### Term 3

24th July to 29th September

#### Term 4

16th October to 15th December



Government of South Australia  
Department for Education

# INFORMATION

---

## PARKING

There is an ever present danger of an accident occurring when bikes, child pedestrians and motor vehicles are in the same area. To reduce the likelihood of an accident, please keep the following in mind:

The staff car park is for use of staff and visitors' cars and authorised vehicular traffic only. Could you please refrain from dropping students off or picking up in this car park. Also, please do not allow your children to walk through the car park as a short cut.

The main parking for pick up and drop off is Goode Terrace. Children are constantly discouraged from cycling in this area. **PLEASE DO NOT PARK ON WHITFORD CRESCENT** which is near the school crossing.

Care should be taken when driving around Whitford Crescent, as this is where the School crossing is located and children are entering and exiting on their bikes.

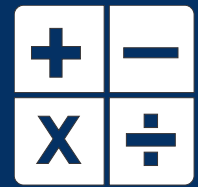
For the safety of all students and families at Nangwarry Primary and Pre-School it is important that we adhere to the parking rules. Please be patient at before and after school pick up times as they are extremely busy. Also please remember that the speed limit around the school is 40km/hour between 8.30am and 3.30pm.

## SEEING THE TEACHER

Teachers are happy to meet with parents at most times, given some notice. It is usually not good practice to begin lengthy discussions with the teacher when dropping your child off in the morning as this is important preparation time for the class. If there is a concern, please make a mutually convenient time as soon as possible. The school prides itself on being efficient in dealing quickly with all student related matters and we rely on your assistance in this regard and your keeping us informed.

# UPPER PRIMARY

## MATHEMATICS



### My Zoo Checklist

- ☐ I have 3 basic shapes and 2 composite shapes as shown below  
  
 ↑ 3 basic shapes      ↑ 2 composite shapes
- ☐ I have written a meaning of area in my own words
- ☐ I have written a meaning of perimeter in my own words
- ☐ I have labelled my shapes lengths and widths
- ☐ I can show my calculation of perimeter and the formula I have used  

$$P = L + W + L + W$$

$$= 20 + 10 + 20 + 10$$

$$= 60$$
 OR  

$$P = (L + W) \times 2$$

$$= (20 + 10) \times 2$$

$$= 60$$
- ☐ I can show my calculation of area by either formula or counting strategy instead of just writing my answer  

$$A = L \times W$$

$$= 20 \times 10$$

$$= 200$$
 OR
- ☐ I can show my understanding of units squared by labelling my area answers with the correct symbol

### Mathematics – Area and Perimeter

#### Learning Intention:

Students will showcase their knowledge of area and perimeter through a formative assessment piece call "My Zoo Design".

#### Success criteria:

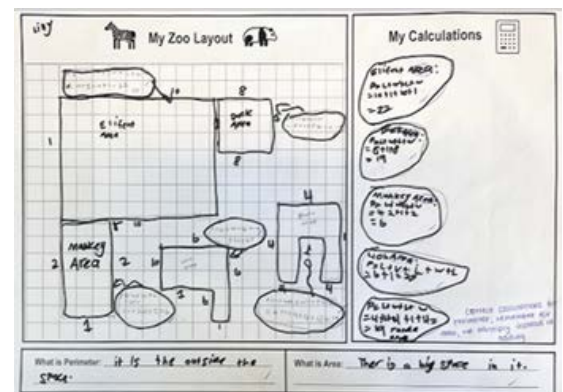
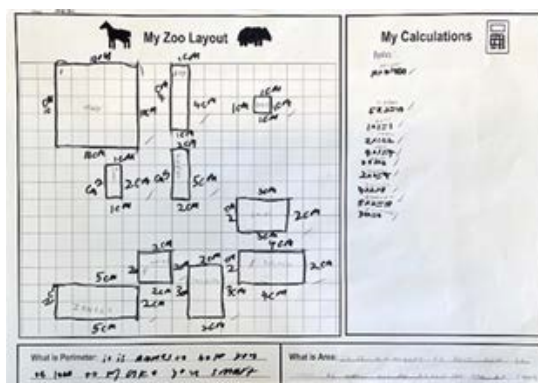
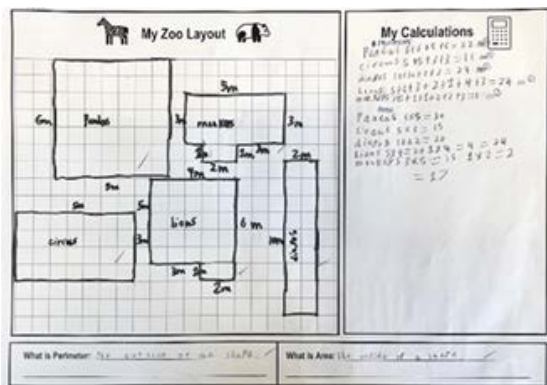
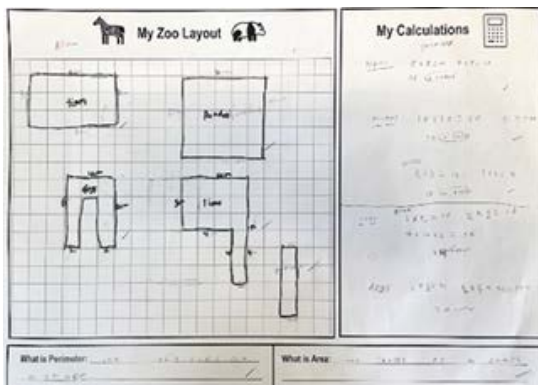
I can explain the meanings of the math concept area and perimeter.

I can model different strategies and demonstrate my understanding of area and perimeter.

I can calculate perimeter and area of simple and composite shapes.

#### Learning Context:

During this week of Mathematics, Upper Primary students showcased their knowledge of area and perimeter, which they had been exploring for the past few weeks. Students designed their own zoo on grid paper, using 2D simple shapes and composite shapes. They then calculated the perimeter and area of each enclosure. Students practiced two different strategies for determining area: the counting strategy (counting the squares within the shape) and the formula  $A = L \times W$ .



# UPPER PRIMARY

---

## LIONS MAD MINUTE



**Learning Intention:**  
To expose students to public speaking.

**Success criteria:**  
I can engage listeners whilst speaking.  
I can describe the topic for one minute of speaking using descriptive language.  
I can practice creative and spontaneous thinking.

**Learning Context:**  
The Lions Mad Minute is a structured impromptu public speaking competition for students in mixed level & Year 5 classes in state and public schools, and its development has been led by the Lions Club.

**Award Winners**  
1st: Asha Dinnison  
2nd Jett Dinnison  
3rd Bradley Dinnison

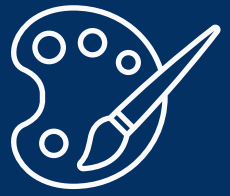
**Judge: Mike Matuschka**





# JUNIOR PRIMARY

## RECONCILIATION WEEK

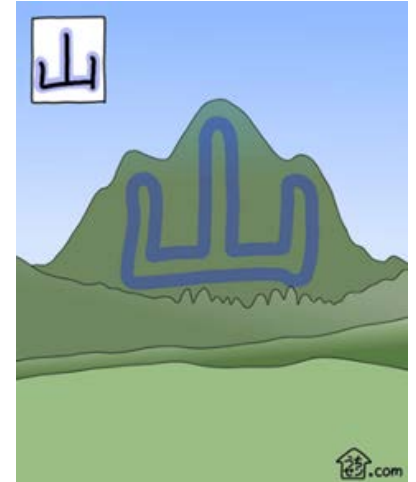
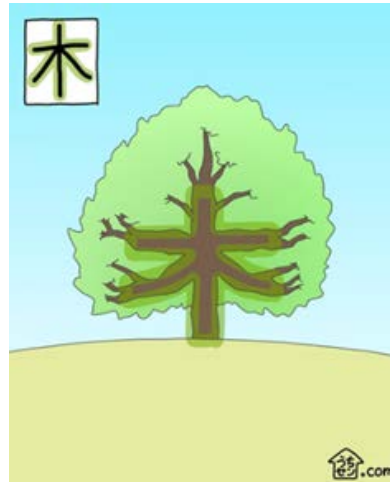
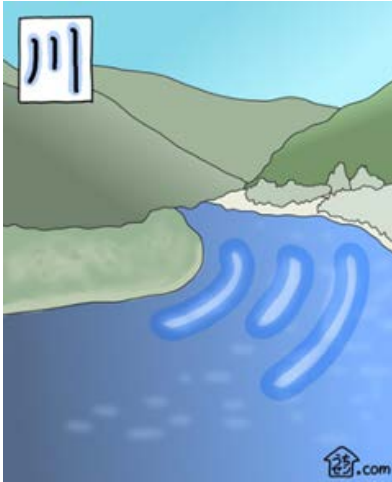


This year, the Junior Primary students commemorated Reconciliation Week by engaging with the book 'Finding our Heart.' The book chronicles the journey of Aboriginal people, exploring their history from pre-settlement to settlement and beyond. A significant aspect of the story is the emphasis on the Uluru Treaty and the pursuit of equal voting rights for Aboriginal individuals. As a class, we deepened our understanding by watching a BTN (Behind the News) episode, reading the book together, examining a map of Australia highlighting Aboriginal tribes, and concluding with an art activity that drew inspiration from the book's front cover. Here is a glimpse of the artwork created by our class.



# JUNIOR PRIMARY

## JAPANESE



Over the past two weeks, in Japanese the students have been studying nature and exploring the process of creating Kanji characters to represent natural concepts. They have been gathering various items from nature and using them to construct their own Kanji symbols. Whenever possible, they have chosen items that are typically found in the vicinity of the concept they are representing.





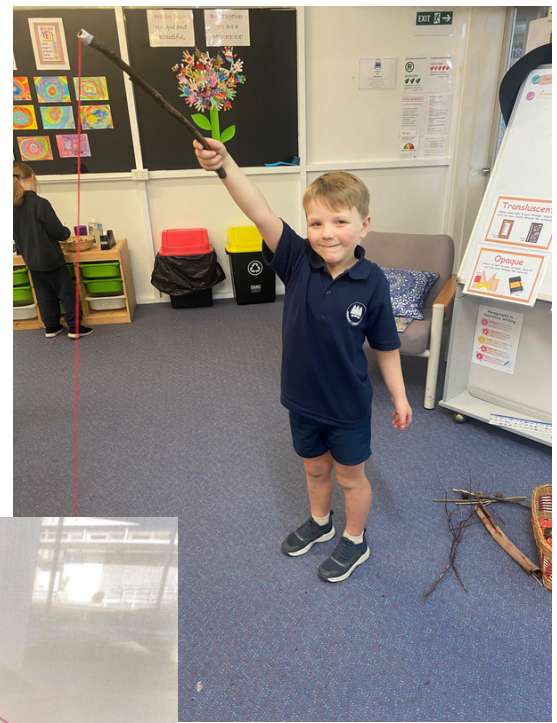
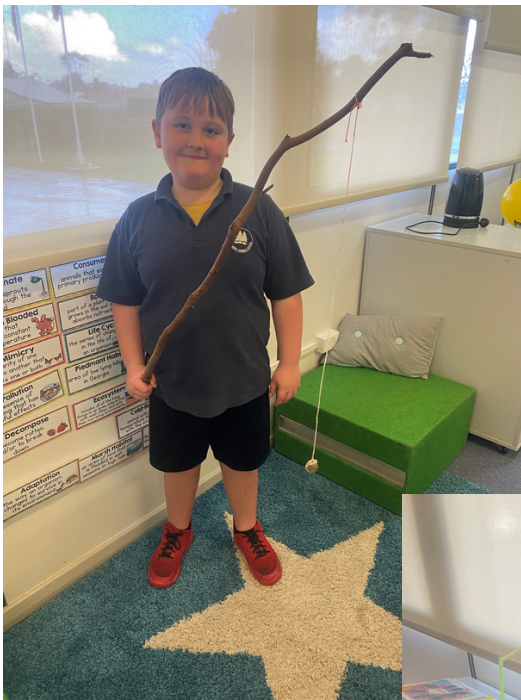
# SPECIALISED SUBJECTS

## SCIENCE & TECHNOLOGY



During Science/Technology lessons the Junior Primary have developed further their understanding of the properties of materials and their uses. The students have investigated the effects of mixing materials together and identified that materials can be changed or combined for a particular purpose. We have investigated the ways Aboriginal and Torres Strait Islander Peoples combine different materials to produce utensils. The students were required to design their own tool that could be effective in everyday living.

The Upper Primary students have observed properties of natural and processed materials. We have explored the property of elasticity in greater depth and conducted an experiment to discover which sports ball had the highest elasticity. The students have looked at the role of people and technology in the mass-production of toys. They have used their knowledge of properties of materials to design and make a toy.



Over the past few weeks, we have been using Kimochi's Way as a guide to explore different ways of promoting well-being and supporting each other through engaging, dramatic play activities. Together, we have been creating scenarios whereby the preschool students can express their emotions.

To support students Literacy growth we have been using music to help with oral language development. The PreLit program allows students to use the skills taught through music to identify syllables in Nursery Rhymes.

We had the chance to visit the library and borrow books with help from Luci. Exploring these books together was fun, and we were allowed to borrow up to five books for a two-week period. We look forward to sharing our thoughts on these books when we are ready to borrow more.

We have been learning about the world around us. Using a large atlas book and a model globe, we have been comparing and identifying our location and familiar objects within our environment. On the map of Australia, we discovered mountains, animals, trees, and flowers, drawing connections to similar natural elements present in Nangwarry.







# HARMONY DAY

Hello everyone! It's been an eventful Term with lots of exciting updates to share. One highlight worth mentioning is the completion of a fantastic project by our Wellbeing Leaders, Asha Dinnison and William Barry. They've worked diligently to create an inspirational sign for our learning lounge, inspired by the guidance of their teacher, Mrs. Illman. The sign, which reads "Believe in Yourself," serves as a powerful message for our entire school community. When we have faith in ourselves, incredible possibilities become attainable. It's a crucial initial step toward achieving success.

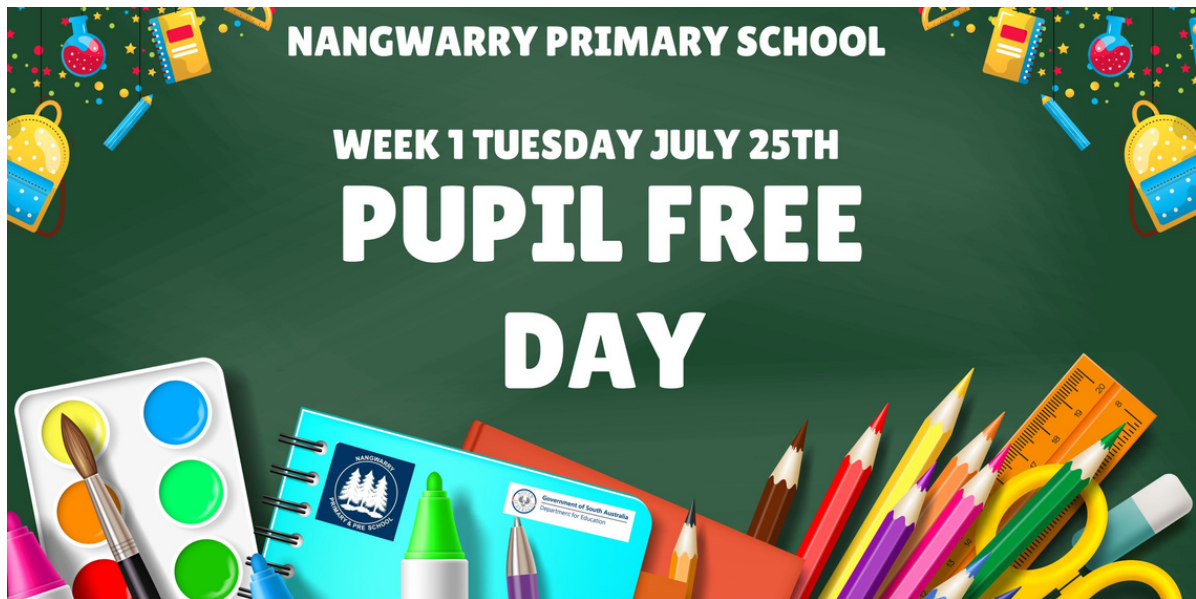
I'm also delighted to announce the new addition of our Kimochi Corner in the Learning Lounge. Now, all students have easy access to the Kimochis whenever they need. This Term, our Kindy and Foundation students have been actively learning about the Kimochis, specifically how to manage feelings of sadness and anger, as well as how to assist others who may be experiencing those emotions. It's a valuable lesson in emotional well-being and empathy.

Lastly, mark your calendars because Pyjama Day is making its return next Friday. Be sure to keep an eye out for our upcoming newsletter, where you can read all about the fun and excitement that unfolds on that day.

Kiara, PCW



# COMMUNITY NEWS



Term 2 Calendar

	MONDAY	TUESDAY	WEDNESDAY	THURSDAY	FRIDAY	SATURDAY	SUNDAY
WEEK 1	1 MAY	2	3	4	5	6	7
WEEK 2	8	9	10	11	12	13	14
WEEK 3	15	16	17	18	19 Pupil free Day	20	21
WEEK 4	22	23	24	25	26 PRESCHOOL DAY	27	28
WEEK 5	29	30	31	1 JUNE	2 Hotdog day	3	4
WEEK 6	5	6 School photo's	7	8	9 PRESCHOOL DAY	10	11
WEEK 7	12 Public Holiday	13	14	15	16	17	18
WEEK 8	19	20	21	22	23 PRESCHOOL DAY	24	25
WEEK 9	26 Governing Council	27	28	29	30 Excursion	1 JULY	2
WEEK 10	3	4	5	6	7 PRESCHOOL DAY PJ Day EARLY DISMISSEL 2:15PM	8	9

Term 3 Calendar

	MONDAY	TUESDAY	WEDNESDAY	THURSDAY	FRIDAY	SATURDAY	SUNDAY
WEEK 1	24	25 Pupil free Day	26	27	28	29	30
WEEK 2	31	Aug 1	2	3	4 PRESCHOOL DAY	5	6
WEEK 3	7	8	9	10	11	12	13
WEEK 4	14	15	16	17	18 PRESCHOOL DAY	19	20
WEEK 5	21	22	23	24	25	26	27
WEEK 6	28	29	30	31	Sep 1 PRESCHOOL DAY	2	3
WEEK 7	4	5	6	7	8	9	10
WEEK 8	11	12	13	14	15 PRESCHOOL DAY	16	17
WEEK 9	18	19	20	21	22	23	24
WEEK 10	25	26	27	28	29 PRESCHOOL DAY EARLY DISMISSEL 2:15PM	30	Oct 1